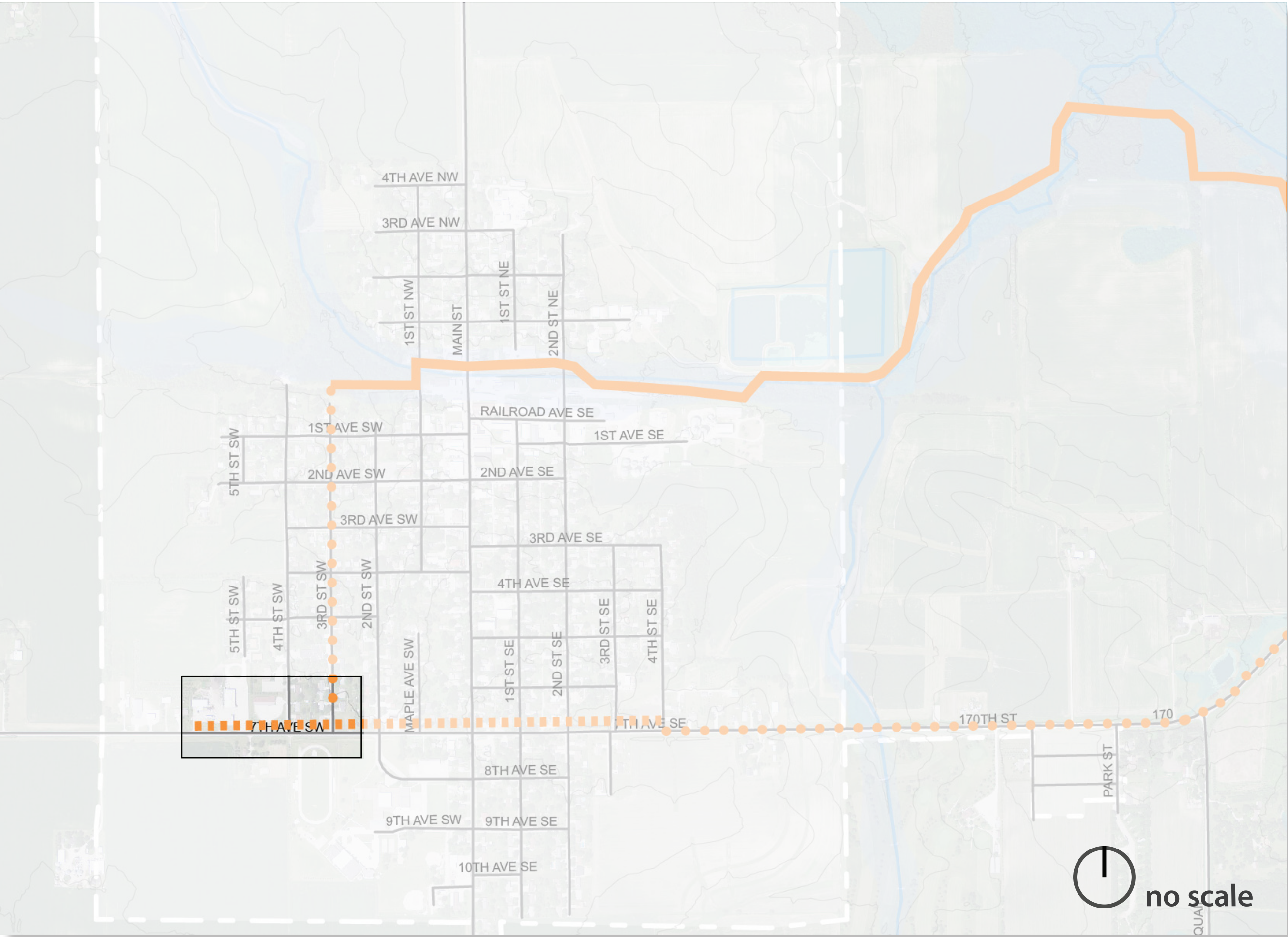


Highway 93 Corridor Pedestrian Enhancements

The relocated Guppy’s grocery store and nearby bowling alley are frequent destinations for students from the community school. Students take bowling classes during the day and have to cross busy Highway 93, which is a safety concern for Tripoli parents. Many residents also expressed a desire to walk to Guppy’s but because no sidewalks exist, they are forced to drive. The design team is proposing a sidewalk to run parallel to the north side of Highway 93 from Guppy’s to Main and 7th Streets. The Iowa Department of Transportation would prefer this sidewalk be placed within the south side of the Highway 93 ROW because of severe grade changes and drainage issues. However, the community would prefer the north side and are willing to work with private landowners to make it feasible. The sidewalk would link to 3rd street, which is considered one leg of Sweet Water Trail. Third Street is currently striped to allow pedestrians and bicyclist to share the road with vehicles. Future plans could examine repairing or replacing existing sidewalks and adding additional sidewalks to 3rd Street, which is a popular route for students walking or biking to school.



Existing Highway 93 looking east



Proposed sidewalk along Highway 93 connecting 3rd Street to destinations along Highway 93



Existing Highway 93 looking west



Proposed sidewalk leading to the relocated Guppy's convenience store and the bowling alley

# Tripoli

## Highway 93 Corridor Pedestrian Enhancements

Landscape Architect: Craig Ritland, FASLA, Craig Ritland Landscape Architects

LA Intern: Shu Liu, ISU Landscape Architecture Extension

Iowa Department of Transportation

Trees Forever

ISU Landscape Architecture Extension

ISU Extension Community and Economic Development

Summer 2012

IOWA'S  
LIVING  
ROADWAYS